

Human Origins
Lab Exercise #3: Hominin Exercises

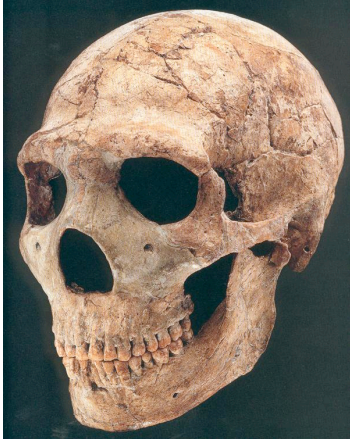
The third lab report for the course will require you to consider the questions posed about the skulls and teeth reproduced below. You will complete these exercises outside of class. Answer each question thoroughly, taking into account the photos provided and the materials in your course text. You may also find helpful information in the supplementary materials section of the course web site.

The written report recording your answers should be presented in an articulate, professional word processed format, using a standard 10 – 12 point font. Present your answers in complete sentences, and edit for good grammar and usage.

The report is due in class on **November 18, 2010.**

Human Origins
Lab Exercise #3: Hominin Exercises

1. Compare the skulls reproduced below and identify each as to probable species. What are the critical features that support your decision in each case (distinguish between derived and ancestral features)? Are there any possible evolutionary relationships among the species represented by these specimens? Why or why not?



#1

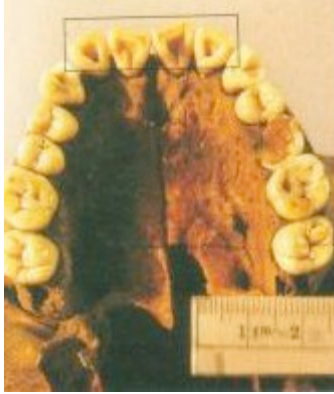


#2



#3

2. Compare the teeth reproduced below and note the dental patterns, size of teeth, and shape of the jaw in each case. Identify each as to probable species and note the critical features that support your decision in each case.



#1



#2